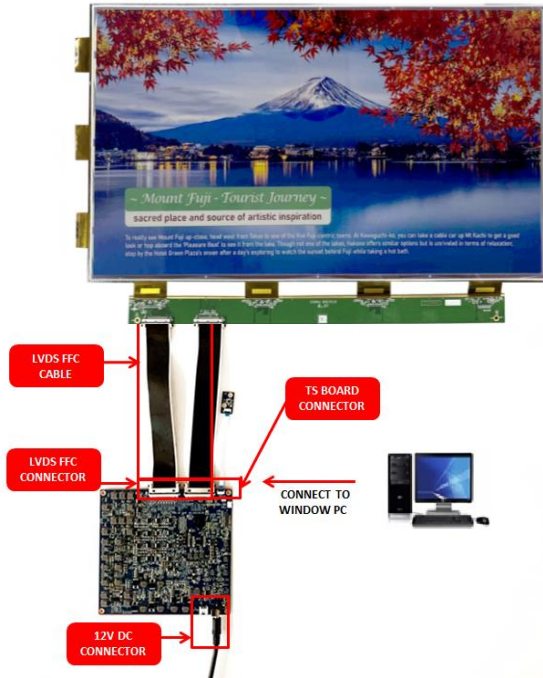




# Quick start guide of Luvia EVK for 25.3" Spectra™ 6 EPD

## EVK Operating SOP

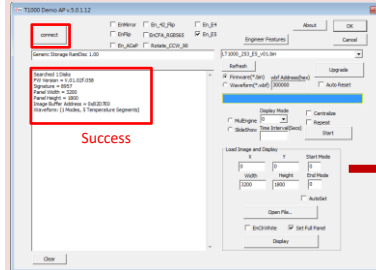
### Demo Kit Hardware Description



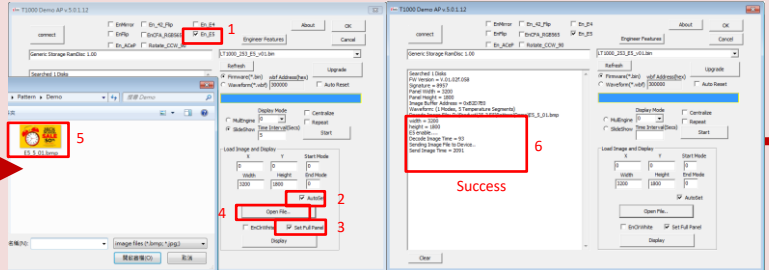
Connector	Function
12V DC CONNECTOR	DC 12V, for TCON power supply
LVDS FFC CONNECTOR	Connector for 25.3" Spectra™ 6 and TCON board
TS BOARD CONNECTOR	Connect to thermal sensor board via 10cm FFC

### Operating Instructions

#### ① Connect to Physical Drive

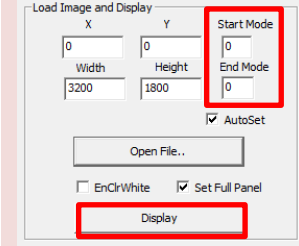


#### ② Load image to L-T1000



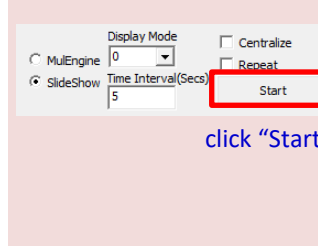
#### A Single Image Mode

#### ③ Display the image



#### B Slide Show Mode

#### ③ Run slideshow



### Engineer Features Description

#### Set/Get VCOM

